

TAURUS FLEXI CAP FUND

*(An open-ended
dynamic equity
scheme investing
across large cap, mid
cap, small cap stocks)*

TAURUSTM
Mutual Fund

LARGE

MID

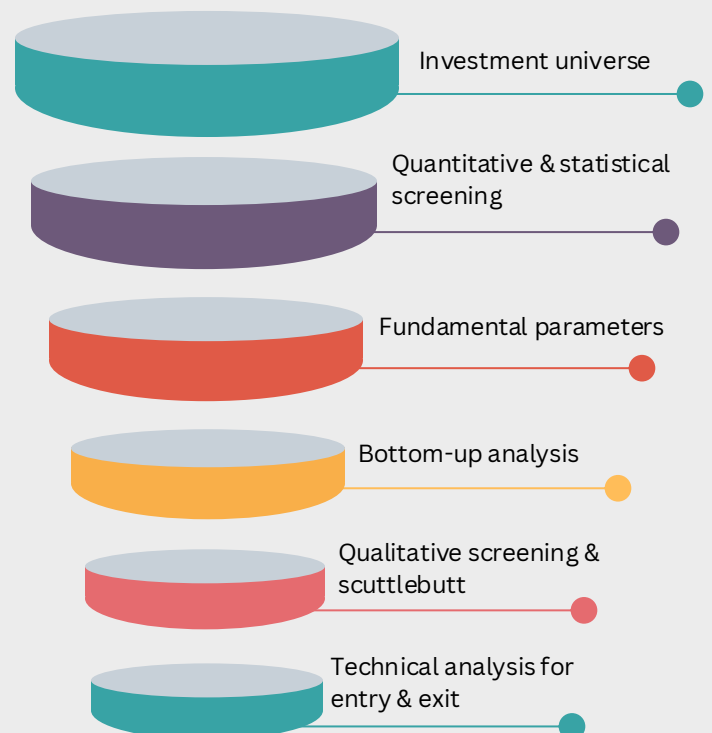
SMALL

Why settle for one
when you can have
all?

Investment Framework



SMART ALPHA

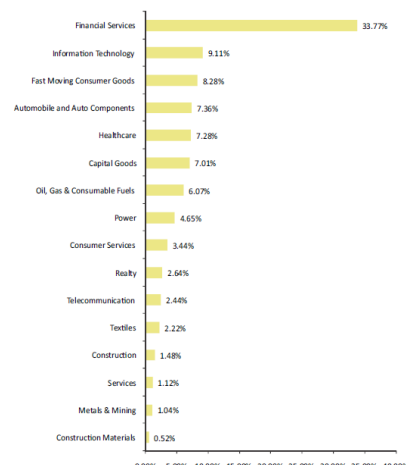


Mutual Fund investments are subject to market risks, read all scheme related documents carefully.

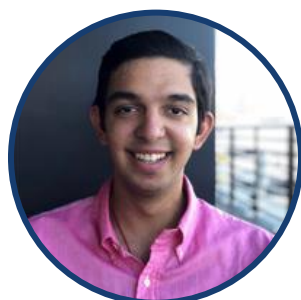
PORTFOLIO HOLDING

EQUITY SECTOR ALLOCATION

Security Name	% of Net Asset
HDFC Bank Ltd.	9.66%
Mahindra & Mahindra Ltd.	4.66%
ICICI Bank Ltd.	4.64%
ITC Ltd.	4.46%
Axis Bank Ltd.	4.08%
HCL Technologies Ltd.	3.93%
KEI Industries Ltd.	3.59%
Infosys Ltd.	3.29%
Coal India Ltd.	3.03%
State Bank of India	2.72%



MEET THE TEAM



Kanishk Kapur
Director & CIO



Anuj Kapil
Fund Manager-Equity

Scheme Features

Inception Date - January 29, 1994

Benchmark

**BSE
500 TRI**

Monthly AUM

Monthly Avg AUM
INR **331.12** Cr.

Month End AUM
INR **337.97** Cr.

Sharpe Ratio 0.37

Sortino Ratio 0.59

Sortino Ratio > Sharpe Ratio → Less volatility on the downside

For further information about other scheme features please visit the website: <http://https://www.taurusmutualfund.com>

Name of the Scheme	Riskometer Scheme #	Riskometer Scheme Indices
Taurus Flexi Cap Fund An open-ended dynamic equity scheme investing across large cap, mid cap, small cap stocks This product is suitable for Investors who are seeking* <ul style="list-style-type: none"> Long term capital appreciation Investment in equity & equity related instruments - flexi-cap in nature 	 Investors understand that their principal will be at very high risk	 Risk-O-Meter - BSE 500 TRI

*Investors should consult their financial advisers if in doubt about whether the product is suitable for them.

*Source : ICRA

March 2025

Taurus Asset Management Co. Ltd. 3rd Floor, 301-304, Chandravillas Co-op Premises Society Ltd., AML Centre 2, 8 Mahal Industrial Estate, Off. Mahakali Caves Road, Andheri East, Mumbai-400093

Mutual Fund investments are subject to market risks, read all scheme related documents carefully.